

Engine

Engine Model	Cat® C7 ACERT™	
Net Flywheel Power	152 kW	204 hp
Net Power – ISO 9249	152 kW	204 hp
Net Power – SAE J1349	151 kW	202 hp
Net Power – EEC 80/1269	152 kW	204 hp
Bore	110 mm	4.3 in
Stroke	127 mm	5 in
Displacement	7.2 L	440 in ³

- The 328D LCR meets U.S. EPA Tier 3 emissions and EU Stage IIIa engine emissions requirements.
- Net power advertised is the power available at the flywheel when the engine is equipped with fan, air cleaner, muffler and alternator.
- No engine derating needed up to 2300 m (7,500 ft).

Weights

Operating Weight	34 700 kg	76,500 lb
------------------	-----------	-----------

- Reach boom, R3.2CB2 (10 ft 6 in) Stick, 1.2 m³ (1.57 yd³) Bucket, 850 mm (34 in) Shoes.

Service Refill Capacities

Fuel Tank Capacity	406 L	106 gal
Cooling System	32 L	8.5 gal
Engine Oil	32 L	8.5 gal
Swing Drive	10 L	2.6 gal
Final Drive (each)	8 L	2.1 gal
Hydraulic System (including tank)	290 L	76.6 gal
Hydraulic Tank	153 L	40.4 gal

Track

Optional	850 mm	34 in
Optional	600 mm	24 in
Optional	700 mm	28 in
Number of Shoes Each Side – Long Undercarriage	49	
Number of Track Rollers Each Side – Long Undercarriage	9	
Number of Carrier Rollers Each Side – Long Undercarriage	2	

Swing Mechanism

Swing Speed	10.2 RPM	
Swing Torque	82.2 kN·m	60,628 lb ft

Drive

Maximum Drawbar Pull	300 kN	67,443 lb
Maximum Travel Speed	4.2 km/h	2.6 mph

Hydraulic System

Main Implement System – Maximum Flow (2x)	235 L/min	62 gal/min
Max. pressure – Equipment	35 000 kPa	5,076 psi
Max. pressure – Equipment – Heavy	36 000 kPa	5,221 psi
Max. pressure – Travel	35 000 kPa	5,076 psi
Max. pressure – Swing	27 500 kPa	3,989 psi
Pilot System – Maximum flow	32.4 L/min	8.6 gal/min
Pilot System – Maximum pressure	3900 kPa	566 psi
Boom Cylinder – Bore	140 mm	5.5 in
Boom Cylinder – Stroke	1407 mm	55.4 in
Stick Cylinder – Bore	150 mm	5.9 in
Stick Cylinder – Stroke	1646 mm	64.8 in
CB2 Family Bucket Cylinder – Bore	135 mm	5.3 in
CB2 Family Bucket Cylinder – Stroke	1156 mm	46 in
DB Family Bucket Cylinder – Bore	150 mm	5.9 in
DB Family Bucket Cylinder – Stroke	1156 mm	46 in

Sound Performance

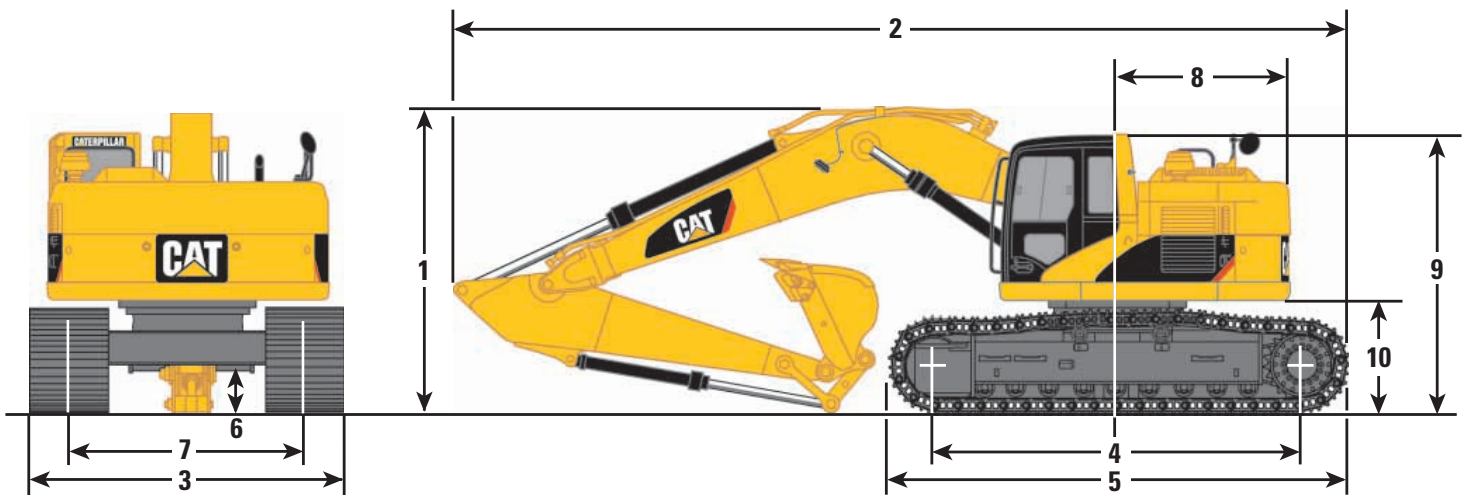
- | | |
|-------------|----------|
| Performance | ANSI/SAE |
|-------------|----------|
- When properly installed and maintained, the cab offered by Caterpillar, when tested with doors and windows closed according to ANSI/SAE J1166 OCT 98, meets OSHA and MSHA requirements for operator sound exposure limits in effect at time of manufacture.
 - Hearing protection may be needed when operating with an open operator station and cab (when not properly maintained or doors/windows open) for extended periods or in noisy environment.

Standards

Brakes	SAE J1026 APR90
Cab/FOGS	SAE J1356 FEB88 ISO 10262

Dimensions

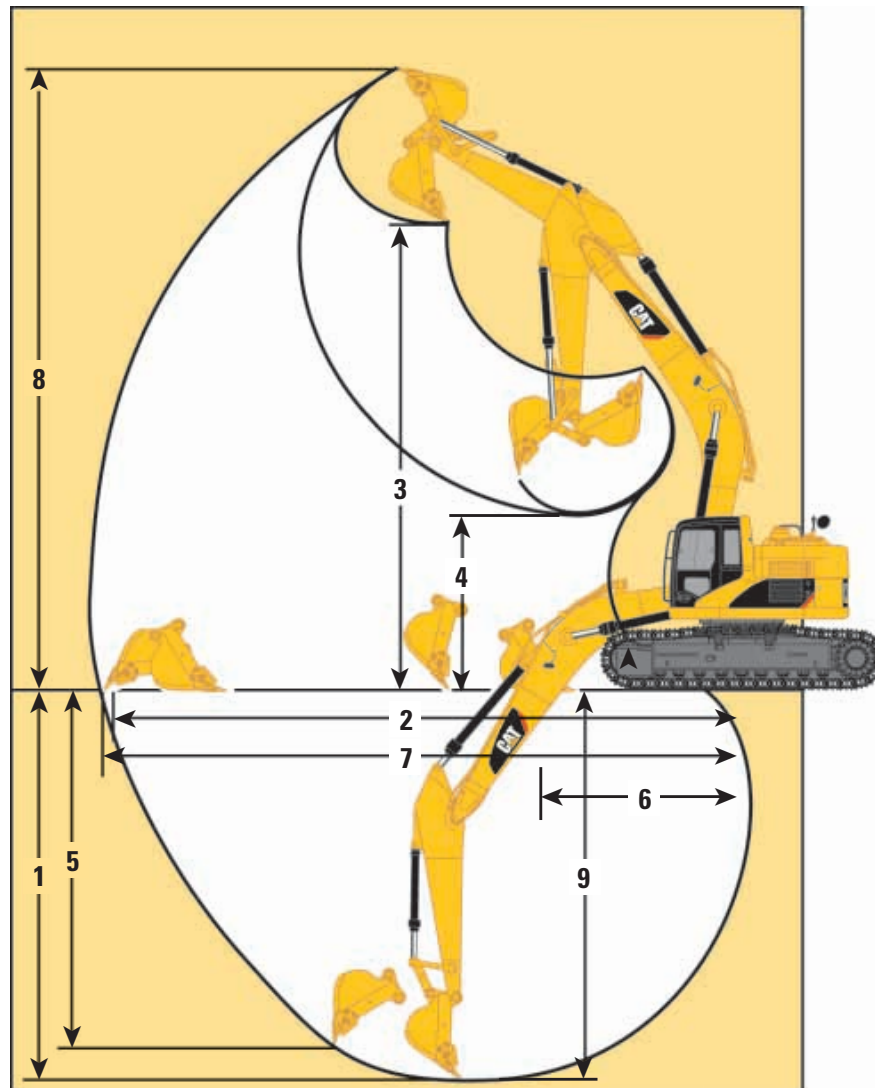
All dimensions are approximate.



Boom Options

	Reach 6.15 m (20'2")	Reach 6.15 m (20'2")
Stick Options	R3.2CB2 m (10'6")	R2.65CB2 m (8'8")
1 Shipping Height	3370 mm (11'1")	3400 mm (11'2")
2 Shipping Length	9820 mm (32'3")	9830 mm (32'3")
3 Tail Swing Radius	1900 mm (6'3")	1900 mm (6'3")
4 Length to Center of Idler and Sprocket	4040 mm (13'3")	4040 mm (13'3")
5 Track Length	5020 mm (16'6")	4860 mm (16'6")
6 Ground Clearance	510 mm (1'8")	510 mm (1'8")
7 Track Gauge	2590 mm (8'6")	2590 mm (8'6")
8 Transport Width		
850 mm (34") shoes	3440 mm (11'3")	3440 mm (11'3")
700 mm (28") shoes	3290 mm (10'10")	3290 mm (10'10")
600 mm (24") shoes	3190 mm (10'6")	3190 mm (10'6")
9 Cab Height	3190 mm (10'0")	3190 mm (10'0")
10 Counterweight Clearance	1200 mm (3'11")	1200 mm (3'11")

Note: All numbers are approximate.



Boom

Reach

6.15 m (20'2")

Reach

6.15 m (20'2")

Stick Length

R3.2CB2 m (10'6")

R2.65CB2 m (8'8")

Bucket

HD 1.2 m³ (1.57 yd³)

HD 1.2 m³ (1.57 yd³)

1	Maximum Digging Depth	6920 mm (22'8")	6370 mm (20'11")
2	Maximum Reach at Ground Level	10 560 mm (34'8")	10 080 mm (33'1")
3	Maximum Loading Height	8040 mm (26'5")	7820 mm (25'8")
4	Minimum Loading Height	2990 mm (9'10")	3560 mm (11'8")
5	Maximum Vertical Wall Digging Depth	6260 mm (20'6")	5730 mm (18'10")
6	Minimum Front Swing Radius	3400 mm (11'2")	3380 mm (11'1")
7	Maximum Reach	10 770 mm (35'4")	10 310 mm (33'10")
8	Maximum Cutting Height	11 110 mm (36'5")	10 910 mm (35'10")
9	Maximum Depth Cut for 2440 mm (8') Level Bottom	6760 mm (22'2")	6190 mm (20'4")