

# Technical Data

## LIEBHERR R 926 LC LITRONIC



### Engine

Rating per ISO 9249	130 kW (177 HP) at 1,800 RPM
Model	Liebherr D 934 S
Type	4 cylinder in-line
Bore/Stroke	122/136 mm
Displacement	6.36 l
Engine operation	4-stroke diesel unit pump system turbo-charged after-cooled and fuel cooled reduced emissions
Cooling	water-cooled and integrated motor oil cooler
Air cleaner	dry-type air cleaner with pre-cleaner, primary and safety elements
Fuel tank	380 l
Electrical system	
Voltage	24 V
Batteries	2 x 135 Ah/12 V
Starter	24 V/6.6 kW
Alternator	three phase current 28 V/80 A
Engine idling	sensor-controlled



### Hydraulic System

Hydraulic system	Positive Control Classic. Dual circuit hydraulic system for independent and need-based quantity allotment via the hydraulic pumps
Hydraulic pump	Liebherr variable displacement pump built in transversal plate style, in parallel arrangement with integrated transfer box
Max. flow	2 x 238 l/min.
Max. pressure	365 bar
Pump regulation	electro-hydraulic with electronic engine speed sensing regulation, pressure compensation, flow compensation, automatic oil flow optimizer, swing circuit with priority and torque control. 2 independent circuits with hydraulic pump summation for individual equipment movements
Hydraulic tank	290 l
Hydraulic system	max. 500 l
Hydraulic oil filter	1 full flow filter (20 µm) in return line with integrated fine filter area (5 µm)
Hydraulic oil cooler	compact cooler, consisting of a water cooler, sandwiched with hydraulic oil cooler, fuel cooler and after-cooler cores and hydrostatically driven fan
MODE selection	adjustment of engine and hydraulic performance via amode pre-selector to match application, e.g. for especially economical and environmentally friendly operation or for maximum digging performance and heavy-duty jobs
RPM adjustment	stepless adjustment of engine output via RPM at each selected mode
Liebherr Tool Control	10 preadjustable pump flows and pressures for add-on tools



### Hydraulic Controls

The control of movements steered by joysticks demand are regulated by a hydraulic valve block.

Power distribution	via control valve with integrated safety valves
Servo circuit	
Attachment and swing	proportional via joystick levers
Travel	- with proportionally functioning foot pedals or adjusted with a plugable lever - speed pre-selection
Additional functions	via foot pedals or buttons



### Swing Drive

Drive by	Liebherr swash plate motor
Transmission	Liebherr compact planetary reduction gear
Swing ring	Liebherr, sealed single race ball bearing swing ring, internal teeth
Swing speed	0 - 11 RPM stepless
Swing torque	79 kNm
Holding brake	wet multi-disc (spring applied, pressure released)



### Operator's Cab

Cab	built from deep-drawn components, resiliently-mounted, sound-insulated, tinted windows, front window stores overhead, door with sliding window
Operator's seat	shock-absorbing suspension, adjustable to operator's weight, 6-way adjustable seat
Control system	integrated into the adjustable console panel in the operator's seat
Monitoring	menu driven query of current operating conditions via the display. Automatic monitoring, display, warning (acoustical and optical signal) and saving machine malfunction data, for example; engine overheating, low engine oil pressure or low hydraulic oil level
Air-conditioning	standard air conditioning, combined cooler/heater, additional dust filter in fresh air/recirculated
Noise emission	
ISO 6396	L <sub>PA</sub> (inside cab) = 72 dB(A)
2000/14/EC	L <sub>WA</sub> (surround noise) = 103 dB(A)



### Undercarriage

Versions	
NLC	gauge (2,000 mm)
SLC	gauge (2,250 mm)
LC	standard gauge (2,380 mm)
WLC	gauge (2,590 mm)
Drive	Liebherr swash plate motors with integrated brake valves on both sides
Transmission	Liebherr planetary reduction gears
Travel speed	low range - 3.7 km/h high range - 6.1 km/h
Net drawbar pull on crawler	217 kN
Track components	B 60, maintenance-free
Track rollers/Carrier rollers	9/2
Tracks	sealed and greased
Track pads	triple-grouser
Digging locks	wet multi-discs (spring applied, pressure released)
Brake valves	integrated into travel motor
Lashing eyes	integrated



### Attachment

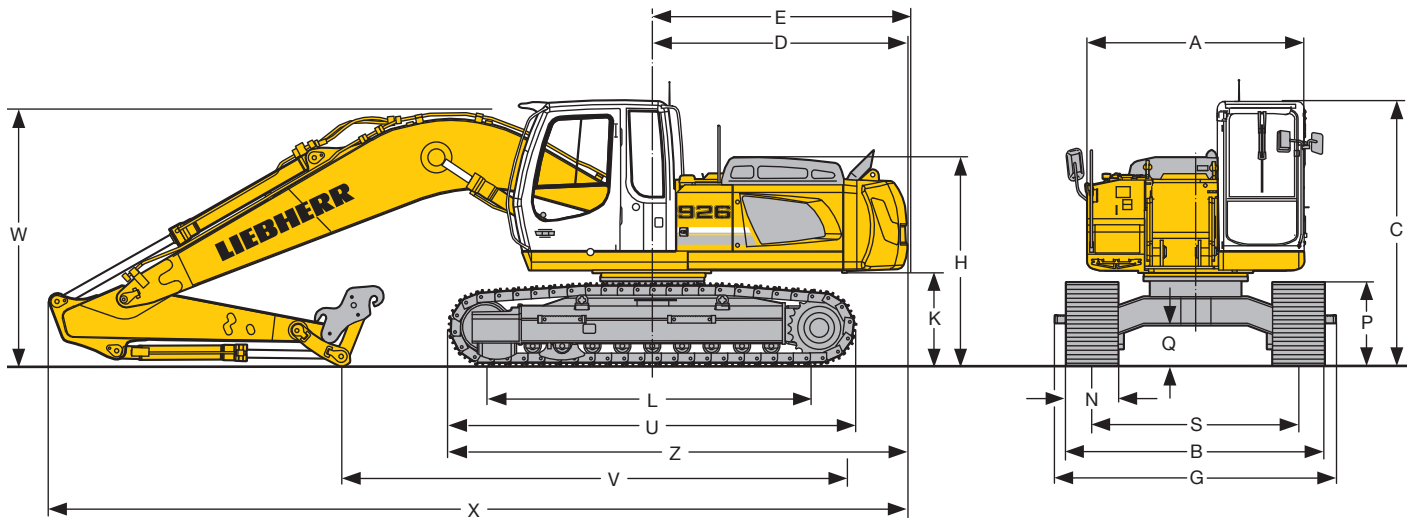
Type	combination of resistant steel plates and forged components
Hydraulic cylinders	Liebherr cylinders with special seal-system, shock absorbed
Pivots	sealed, low maintenance
Lubrication	semi-automatic central lubrication system (except link and tilt geometry)
Hydraulic connections	pipes and hoses equipped with SAE splitflange connections
Bucket	fitted as standard with Liebherr tooth system

## Classic

Operating Weight:	28,300 kg
Engine Output:	177 hp
Bucket Capacity:	1.55 m <sup>3</sup>

# Dimensions

## LIEBHERR R 926 LC LITRONIC



Classic

	<b>NLC</b>			<b>SLC</b>			mm		
A							2,500		
C							3,057		
D							2,920		
E							2,940		
H							2,412		
K							1,105		
L							3,838		
P							955		
Q							460		
S							2,000		
U							4,700		
Z							5,275		
N	500	600	750	500	600	750	900		
B	2,500	2,600	2,750	2,810	2,850	3,000	3,150		
G	2,500	2,780	2,780	3,110	3,110	3,110	3,150		

<b>Gooseneck Boom 5.90 m</b>					
Stick length	m	2.20	2.40	2.70	3.00
V for NLC-Undercarriage	mm	6,050	5,900	5,600	5,400
for SLC-Undercarriage	mm	6,050	5,900	5,600	5,400
for LC-Undercarriage	mm	6,050	5,900	5,600	5,400
for WLC-Undercarriage	mm	6,050	5,900	5,600	5,400
W	mm	2,950	3,000	3,050	3,100
X	mm	9,850	9,850	9,850	9,900

<b>Hydraulically Adjustable Boom 4.00 m</b>					
Stick length	m	2.20	2.40	2.70	3.00
V for NLC-Undercarriage	mm	6,700	6,500	6,300	6,050
for SLC-Undercarriage	mm	6,700	6,500	6,300	6,050
for LC-Undercarriage	mm	6,700	6,500	6,300	6,050
for WLC-Undercarriage	mm	6,700	6,500	6,300	6,050
W	mm	2,700	2,750	2,800	2,900
X	mm	10,400	10,400	10,400	10,400

	<b>LC</b>			<b>WLC</b>			mm			
A							2,500			
C							3,057			
D							2,920			
E							2,940			
H							2,412			
K							1,105			
L							3,838			
P							955			
Q							460			
S							2,380			
U							4,700			
Z							5,275			
N	500	600	750	900	500	600	750	900		
B	2,974	2,980	3,130	3,280	3,184	3,190	3,340	3,490		
G	2,974	2,980	3,274	3,280	3,184	3,190	3,484	3,490		

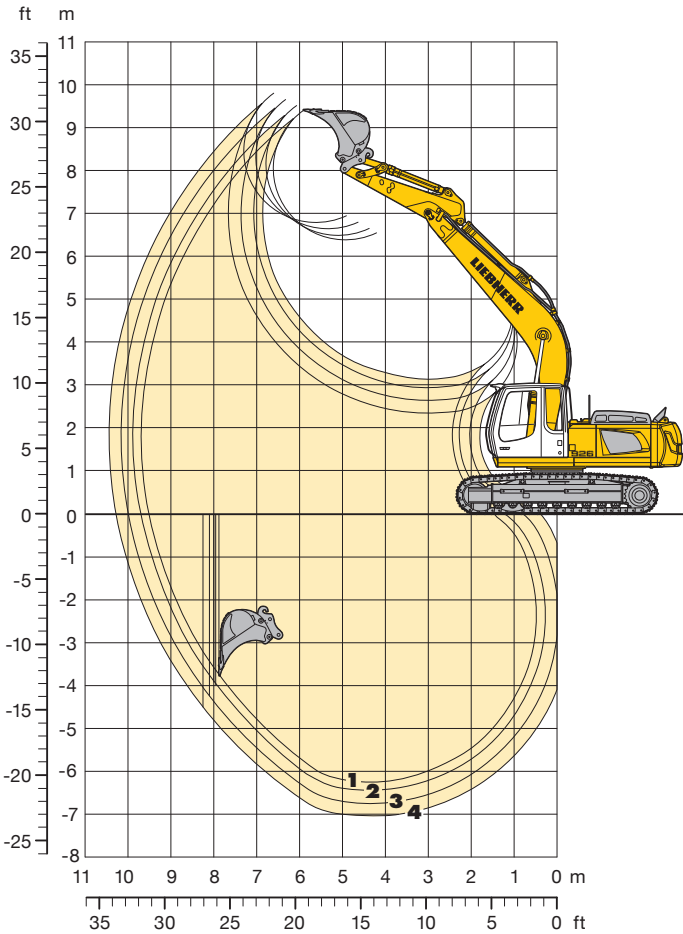
E = Tail radius

G = Width with removable steps

# Backhoe Attachment

with Gooseneck Boom 5.90 m

Classic



## Digging Envelope with Quick Change Adapter

		1	2	3	4
Stick lengths	m	2.20	2.40	2.70	3.00
Max. digging depth	m	6.25	6.45	6.75	7.05
Max. reach at ground level	m	9.50	9.70	10.00	10.25
Max. dump height	m	6.35	6.50	6.60	6.75
Max. teeth height	m	9.40	9.50	9.65	9.80

## Digging Forces without Quick Change Adapter

		1	2	3	4
Digging force ISO	kN	154	145	134	124
	t	15.7	14.8	13.7	12.6
Breakout force ISO	kN	185	185	185	185
	t	18.9	18.9	18.9	18.9

## with Quick Change Adapter

Digging force ISO	kN	146	138	128	119
	t	14.9	14.1	13.0	12.1
Breakout force ISO	kN	162	162	162	162
	t	16.5	16.5	16.5	16.5

## Operating Weight and Ground Pressure

Operating weight includes basic machine with gooseneck boom 5.90 m, stick 2.70 m, quick change adapter 48 and bucket 0.95 m<sup>3</sup>.

Undercarriage		NLC			SLC		
Pad width	mm	500	600	750	500	600	750
Weight	kg	25,800	26,050	26,800	25,900	26,150	26,900
Ground pressure	kg/cm <sup>2</sup>	0.62	0.52	0.43	0.63	0.53	0.43

Undercarriage		LC			WLC		
Pad width	mm	500	600	750	500	600	750
Weight	kg	26,000	26,250	27,000	26,050	26,300	27,050
Ground pressure	kg/cm <sup>2</sup>	0.63	0.53	0.44	0.63	0.53	0.44

## Buckets Machine stability per ISO 10567\* (75% of tipping capacity)

Cutting width mm	Capacity ISO 7451 m <sup>3</sup>	Weight kg	NLC-Undercarriage				SLC-Undercarriage				LC-Undercarriage				WLC-Undercarriage			
			Stick length (m)				Stick length (m)				Stick length (m)				Stick length (m)			
			2.20	2.40	2.70	3.00	2.20	2.40	2.70	3.00	2.20	2.40	2.70	3.00	2.20	2.40	2.70	3.00
1,050 <sup>1)</sup>	0.95	700	□	□	□	□	□	□	□	□	□	□	□	□	□	□	□	□
1,250 <sup>1)</sup>	1.15	780	□	□	□	□	□	□	□	□	□	□	□	□	□	□	□	□
1,400 <sup>1)</sup>	1.35	860	□	□	□	△	□	□	□	□	□	□	□	□	□	□	□	□
1,500 <sup>1)</sup>	1.45	900	□	△	△	■	□	□	□	□	□	□	□	□	□	□	□	□
1,600 <sup>1)</sup>	1.55	940	△	■	■	■	□	□	△	□	□	□	△	□	□	□	□	△
1,050 <sup>2)</sup>	0.95	710	□	□	□	□	□	□	□	□	□	□	□	□	□	□	□	□
1,250 <sup>2)</sup>	1.15	790	□	□	□	△	□	□	□	□	□	□	□	□	□	□	□	□
1,400 <sup>2)</sup>	1.35	870	□	△	△	■	□	□	△	□	□	□	□	□	□	□	□	□
1,500 <sup>2)</sup>	1.45	910	△	△	■	■	□	□	△	■	□	□	△	□	□	□	□	□
1,600 <sup>2)</sup>	1.55	950	■	■	■	■	□	△	■	■	□	□	△	■	□	□	□	△

\* Indicated loads are based on ISO 10567 max. stick length, lifted 360° on firm

<sup>1)</sup> Bucket without quick change adapter

<sup>2)</sup> Bucket with quick change adapter

Other backhoes available on request

Max. material weight □ = ≤ 1.8 t/m<sup>3</sup>, △ = ≤ 1.5 t/m<sup>3</sup>, ■ = ≤ 1.2 t/m<sup>3</sup>, ▲ = not authorized

# Lift Capacities

## with Gooseneck Boom 5.90 m

### Stick 2.20 m

m	Under-carriage	3.0 m		4.5 m		6.0 m		7.5 m		9.0 m		m
		LC	WLC	LC	WLC	LC	WLC	LC	WLC	LC	WLC	
10.5	NLC <sup>1)</sup>											
	SLC											
	LC											
9.0	NLC <sup>1)</sup>											
	SLC											
	LC											
7.5	NLC <sup>1)</sup>											
	SLC										4.0*	4.0*
	LC										4.0*	4.0*
6.0	NLC <sup>1)</sup>											
	SLC											
	LC											
4.5	NLC <sup>1)</sup>											
	SLC											
	LC											
3.0	NLC <sup>1)</sup>											
	SLC											
	LC											
1.5	NLC <sup>1)</sup>											
	SLC											
	LC											
0	NLC <sup>1)</sup>											
	SLC											
	LC											
-1.5	NLC <sup>1)</sup>											
	SLC											
	LC											
-3.0	NLC <sup>1)</sup>											
	SLC											
	LC											
-4.5	NLC <sup>1)</sup>											
	SLC											
	LC											

### Stick 2.40 m

m	Under-carriage	3.0 m		4.5 m		6.0 m		7.5 m		9.0 m		m
		LC	WLC	LC	WLC	LC	WLC	LC	WLC	LC	WLC	
10.5	NLC <sup>1)</sup>											
	SLC											
	LC											
9.0	NLC <sup>1)</sup>											
	SLC											
	LC											
7.5	NLC <sup>1)</sup>											
	SLC											
	LC											
6.0	NLC <sup>1)</sup>											
	SLC											
	LC											
4.5	NLC <sup>1)</sup>											
	SLC											
	LC											
3.0	NLC <sup>1)</sup>											
	SLC											
	LC											
1.5	NLC <sup>1)</sup>											
	SLC											
	LC											
0	NLC <sup>1)</sup>											
	SLC											
	LC											
-1.5	NLC <sup>1)</sup>											
	SLC											
	LC											
-3.0	NLC <sup>1)</sup>											
	SLC											
	LC											
-4.5	NLC <sup>1)</sup>											
	SLC											
	LC											

Classic

### Stick 2.70 m

m	Under-carriage	3.0 m		4.5 m		6.0 m		7.5 m		9.0 m		m
		LC	WLC	LC	WLC	LC	WLC	LC	WLC	LC	WLC	
10.5	NLC <sup>1)</sup>											
	SLC											
	LC											
9.0	NLC <sup>1)</sup>											
	SLC											
	LC											
7.5	NLC <sup>1)</sup>											
	SLC											
	LC											
6.0	NLC <sup>1)</sup>											
	SLC											
	LC											
4.5	NLC <sup>1)</sup>											
	SLC											
	LC											
3.0	NLC <sup>1)</sup>											
	SLC											
	LC											
1.5	NLC <sup>1)</sup>											
	SLC											
	LC											
0	NLC <sup>1)</sup>											
	SLC											
	LC											
-1.5	NLC <sup>1)</sup>											
	SLC											
	LC											
-3.0	NLC <sup>1)</sup>											
	SLC											
	LC											
-4.5	NLC <sup>1)</sup>											
	SLC											
	LC											

### Stick 3.00 m

m	Under-carriage	3.0 m		4.5 m		6.0 m		7.5 m		9.0 m		m
		LC	WLC	LC	WLC	LC	WLC	LC	WLC	LC	WLC	
10.5	NLC <sup>1)</sup>											
	SLC											
	LC											
9.0	NLC <sup>1)</sup>											
	SLC											
	LC											
7.5	NLC <sup>1)</sup>											
	SLC											
	LC											
6.0	NLC <sup>1)</sup>											
	SLC											
	LC											
4.5	NLC <sup>1)</sup>											
	SLC											
	LC											
3.0	NLC <sup>1)</sup>											
	SLC											
	LC											
1.5	NLC <sup>1)</sup>											
	SLC											
	LC											
0	NLC <sup>1)</sup>											
	SLC											
	LC											
-1.5	NLC <sup>1)</sup>											
	SLC											
	LC											
-3.0	NLC <sup>1)</sup>											
	SLC											
	LC											
-4.5	NLC <sup>1)</sup>											
	SLC											
	LC											

Height Can be slewed though 360° In longitudinal position of undercarriage Max. reach \* Limited by hydr. capacity

The lift capacities on the load hook of the Liebherr quick change adapter 48 without attachment are stated in metric tonnes (t), and can be lifted 360° on firm, level supporting surface. Adjacent values are valid for the undercarriage when in the longitudinal position. Capacities are valid for 600 mm wide triple-grouser pads. Indicated loads are based on ISO 10567 standard and do not exceed 75 % of tipping or 87 % of hydraulic capacity (indicated by \*) or are limited through the allowed lift capacity of the load hook on the quick change adapter (12 t). Without quick change adapter the lift capacities will increase by 250 kg, without bucket cylinder, link and lever they increase by an additional 375 kg.

According to European Standard, EN 474-5: In the European Union excavators have to be equipped with an overload warning device, a load diagram and automatic check valves on the hoist cylinders, when they are used for lifting operations which require the use of lifting accessories.

<sup>1)</sup> Values are calculated with 500 mm wide triple-grouser pads for the NLC-Undercarriage

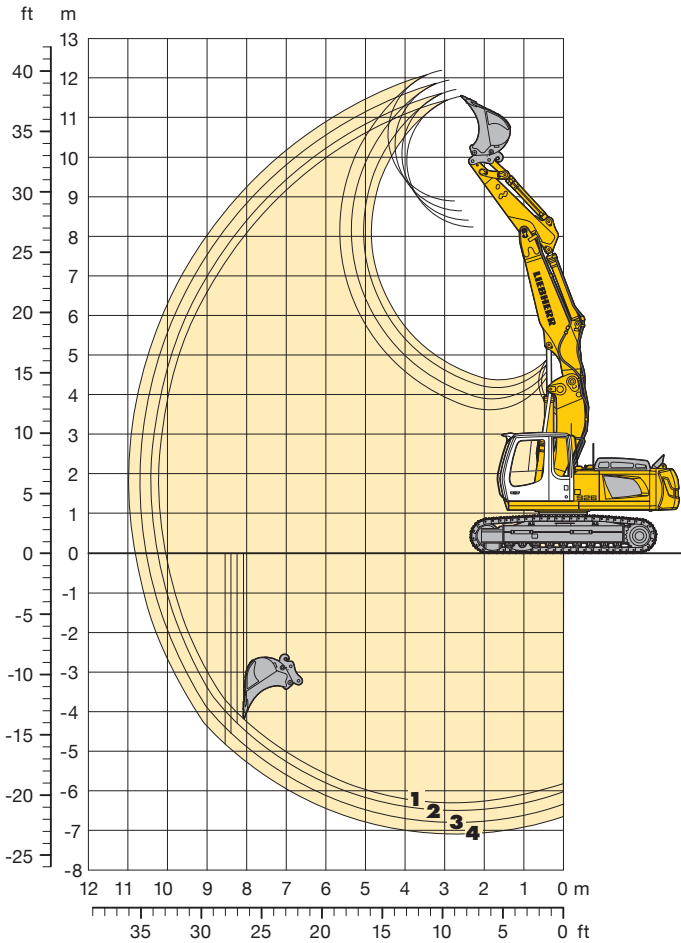
# Backhoe Attachment



# Classic

with Hydr. Adjustable Main Boom 4,00 m

Classic



## Digging Envelope with Quick Change Adapter

		1	2	3	4
Stick lengths	m	2.20	2.40	2.70	3.00
Max. digging depth	m	6.30	6.50	6.80	7.10
Max. reach at ground level	m	10.05	10.25	10.50	10.80
Max. dump height	m	8.25	8.40	8.65	8.90
Max. teeth height	m	11.50	11.70	11.95	12.20

## Digging Forces without Quick Change Adapter

		1	2	3	4
Digging force ISO	kN	154	145	134	124
	t	15.7	14.8	13.7	12.6
Breakout force ISO	kN	185	185	185	185
	t	18.9	18.9	18.9	18.9

## with Quick Change Adapter

Digging force ISO	kN	146	138	128	119
	t	14.9	14.1	13.0	12.1
Breakout force ISO	kN	162	162	162	162
	t	16.5	16.5	16.5	16.5

## Operating Weight and Ground Pressure

Operating weight includes basic machine with hydraulically adjustable main boom 4,00 m, stick 2,70 m, quick change adapter 48 and bucket 0,95 m<sup>3</sup>.

Undercarriage		NLC			SLC		
		500	600	750	500	600	750
Pad width	mm	500	600	750	500	600	750
Weight	kg	27,000	27,250	28,000	27,100	27,350	28,100
Ground pressure	kg/cm <sup>2</sup>	0.65	0.55	0.45	0.65	0.55	0.45

Undercarriage		LC			WLC		
		500	600	750	500	600	750
Pad width	mm	500	600	750	500	600	750
Weight	kg	27,200	27,450	28,200	27,250	27,500	28,250
Ground pressure	kg/cm <sup>2</sup>	0.66	0.55	0.45	0.66	0.55	0.45

## Buckets Machine stability per ISO 10567\* (75% of tipping capacity)

Cutting width mm	Capacity ISO 7451 m <sup>3</sup>	Weight kg	NLC-Undercarriage				SLC-Undercarriage				LC-Undercarriage				WLC-Undercarriage			
			Stick length (m)				Stick length (m)				Stick length (m)				Stick length (m)			
			2.20	2.40	2.70	3.00	2.20	2.40	2.70	3.00	2.20	2.40	2.70	3.00	2.20	2.40	2.70	3.00
1,050 <sup>1)</sup>	0.95	700	□	□	□	□	□	□	□	□	□	□	□	□	□	□	□	
1,250 <sup>1)</sup>	1.15	780	□	□	△	△	□	□	□	□	□	□	□	□	□	□	□	
1,400 <sup>1)</sup>	1.35	860	△	△	■	■	□	□	△	△	□	□	△	□	□	□	□	
1,500 <sup>1)</sup>	1.45	900	■	■	■	▲	△	△	■	■	□	□	△	■	□	□	△	
1,600 <sup>1)</sup>	1.55	940	■	■	▲	▲	■	■	■	■	△	△	■	■	□	□	▲	
1,050 <sup>2)</sup>	0.95	710	□	□	□	△	□	□	□	□	□	□	□	□	□	□	□	
1,250 <sup>2)</sup>	1.15	790	△	△	△	■	□	□	□	△	□	□	□	□	□	□	□	
1,400 <sup>2)</sup>	1.35	870	△	■	■	▲	△	△	△	■	□	□	△	□	□	□	□	
1,500 <sup>2)</sup>	1.45	910	■	■	▲	▲	■	■	■	■	△	△	■	■	□	□	△	
1,600 <sup>2)</sup>	1.55	950	■	▲	▲	▲	■	■	■	■	■	■	■	■	□	△	■	

\* Indicated loads are based on ISO 10567 max. stick length, lifted 360° on firm

<sup>1)</sup> Bucket without quick change adapter

<sup>2)</sup> Bucket with quick change adapter

Other backhoes available on request

Max. material weight □ = ≤ 1.8 t/m<sup>3</sup>, △ = ≤ 1.5 t/m<sup>3</sup>, ■ = ≤ 1.2 t/m<sup>3</sup>, ▲ = not authorized

# Lift Capacities

with Hydr. Adjustable Main Boom 4.00 m

## Stick 2.20 m

m	Under-carriage	3.0 m		4.5 m		6.0 m		7.5 m		9.0 m		m
		LC	WLC	LC	WLC	LC	WLC	LC	WLC	LC	WLC	
10.5	NLC <sup>1)</sup>											
	SLC											
	LC											
	WLC											
9.0	NLC <sup>1)</sup>			5.9*	5.9*					4.5*	4.5*	4.91
	SLC			5.9*	5.9*					4.5*	4.5*	
	LC			5.9*	5.9*					4.5*	4.5*	
	WLC			5.9*	5.9*					4.5*	4.5*	
7.5	NLC <sup>1)</sup>			8.2*	8.2*	5.5	6.4*			4.0*	4.0*	6.63
	SLC			8.2*	8.2*	5.5	6.4*			4.0*	4.0*	
	LC			8.2*	8.2*	5.5	6.4*			4.0*	4.0*	
	WLC			8.2*	8.2*	5.5	6.4*			4.0*	4.0*	
6.0	NLC <sup>1)</sup>	10.6*	10.6*	8.7	10.2*	5.6	8.1*	3.6	5.0*	3.4	3.9*	7.69
	SLC	10.6*	10.6*	9.7	10.2*	6.3	8.1*	4.1	5.0*	3.9*	3.9*	
	LC	10.6*	10.6*	10.2	10.2*	6.6	8.1*	4.4	5.0*	3.9*	3.9*	
	WLC	10.6*	10.6*	10.2*	10.2*	7.2	8.1*	4.8	5.0*	3.9*	3.9*	
4.5	NLC <sup>1)</sup>	14.8	17.6*	8.3	11.2*	5.6	8.5*	3.6	6.8*	2.8	3.9*	8.35
	SLC	16.7*	17.6*	9.2	11.2*	6.2*	8.5*	4.1	6.9*	3.3	3.9*	
	LC	17.6	17.6*	9.7*	11.2*	6.5	8.5*	4.4	6.9*	3.5	3.9*	
	WLC	17.6*	17.6*	10.5	11.2*	7.0	8.5*	4.8	6.9*	3.8	3.9*	
3.0	NLC <sup>1)</sup>	14.2	16.1*	8.1	12.1*	5.5	8.8*	3.5	6.7*	2.5	4.1*	8.70
	SLC	16.0	16.1*	9.0	12.1*	6.1	8.8*	4.1	6.8*	2.9	4.1*	
	LC	16.1*	16.1*	9.4	12.1*	6.4	8.8*	4.3	6.8	3.2	4.1*	
	WLC	16.1*	16.1*	10.1	12.1*	6.9*	8.8*	4.7	6.8*	3.5	4.1*	
1.5	NLC <sup>1)</sup>	14.1	17.2*	8.0	12.1*	5.3	8.8*	3.4	6.7	2.4	4.5*	8.77
	SLC	16.0	17.2*	8.9	12.1*	6.0	8.8*	3.9	6.8	2.8	4.5*	
	LC	16.9	17.2*	9.3	12.1*	6.4	8.8*	4.1	6.8	3.0	4.5*	
	WLC	17.2*	17.2*	10.0	12.1*	6.9	8.8*	4.6	6.8	3.3	4.5*	
0	NLC <sup>1)</sup>	13.4	18.9*	7.4	12.1*	4.9	8.8*	3.2	6.5	2.4	5.0*	8.58
	SLC	15.2	18.9*	7.8	12.1*	5.6	8.8*	3.7	6.6	2.8	5.0*	
	LC	17.2	18.9*	9.2	12.1*	5.9	8.8*	3.9	6.6	3.0	5.0*	
	WLC	18.7	18.9*	10.1	12.1*	6.5	8.8*	4.3	6.6	3.4	5.0*	
-1.5	NLC <sup>1)</sup>	12.8	19.5*	7.1	12.4*	4.5	9.1*	3.0	6.2*	2.6	4.4*	8.10
	SLC	15.3	19.5*	8.2	12.4*	5.2	9.1*	3.5	6.2*	3.1	4.4*	
	LC	16.6	19.5*	8.7	12.4*	5.5	9.1*	3.7	6.2*	3.3	4.4*	
	WLC	19.0	19.5*	9.7	12.4*	6.1	9.1*	4.2	6.2*	3.7	4.4*	
-3.0	NLC <sup>1)</sup>	12.7	19.8*	6.7	12.3*	4.2	7.7*	3.1	3.3*	3.1	3.3*	7.29
	SLC	15.2	19.8*	7.8	12.3*	4.9	7.7*	3.3*	3.3*	3.3*	3.3*	
	LC	16.5	19.8*	8.3	12.3*	5.2	7.7*	3.3*	3.3*	3.3*	3.3*	
	WLC	18.9	19.8*	9.3	12.3*	5.8	7.7*	3.3*	3.3*	3.3*	3.3*	
-4.5	NLC <sup>1)</sup>	12.5	13.7*	6.5	7.1*					4.9*	4.9*	5.12
	SLC	13.7*	13.7*	7.1*	7.1*					4.9*	4.9*	
	LC	13.7*	13.7*	7.1*	7.1*					4.9*	4.9*	
	WLC	13.7*	13.7*	7.1*	7.1*					4.9*	4.9*	

## Stick 2.40 m

m	Under-carriage	3.0 m		4.5 m		6.0 m		7.5 m		9.0 m		m		
		LC	WLC	LC	WLC	LC	WLC	LC	WLC	LC	WLC			
10.5	NLC <sup>1)</sup>													
	SLC													
	LC													
	WLC													
9.0	NLC <sup>1)</sup>			6.1*	6.1*							4.1*	4.1*	5.25
	SLC			6.1*	6.1*							4.1*	4.1*	
	LC			6.1*	6.1*							4.1*	4.1*	
	WLC			6.1*	6.1*							4.1*	4.1*	
7.5	NLC <sup>1)</sup>			7.6*	7.6*	5.5	6.3*					3.7*	3.7*	6.89
	SLC			7.6*	7.6*	5.5	6.3*					3.7*	3.7*	
	LC			7.6*	7.6*	5.5	6.3*					3.7*	3.7*	
	WLC			7.6*	7.6*	5.5	6.3*					3.7*	3.7*	
6.0	NLC <sup>1)</sup>	9.1*	9.1*	8.7*	9.3*	5.7	8.0*	3.7	5.4*			3.2	3.5*	7.91
	SLC	9.1*	9.1*	9.3*	9.3*	6.3*	8.0*	4.2	5.4*			3.5*	3.5*	
	LC	9.1*	9.1*	9.3*	9.3*	6.7	8.0*	4.4	5.4*			3.5*	3.5*	
	WLC	9.1*	9.1*	9.3*	9.3*	7.2	8.0*	4.8	5.4*			3.5*	3.5*	
4.5	NLC <sup>1)</sup>	14.9	17.0*	8.3	11.0*	5.6	8.4*	3.7	6.8			2.7	3.6*	8.55
	SLC	16.8*	17.0*	9.3	11.0*	6.2	8.4*	4.2	6.9*			3.1	3.6*	
	LC	17.0*	17.0*	9.8	11.0*	6.5	8.4*	4.4	6.9*			3.4	3.6*	
	WLC	17.0*	17.0*	10.6	11.0*	7.0	8.4*	4.8	6.9*			3.6*	3.6*	
3.0	NLC <sup>1)</sup>	14.2	16.1*	8.1	12.0*	5.5	8.8*	3.6	6.7*			2.4	3.7*	8.89
	SLC	16.0	16.1*	8.9	12.0*	6.1	8.8*	4.1	6.8			2.8	3.7*	
	LC	16.1*	16.1*	9.4	12.0*	6.4	8.8*	4.3	6.8*			3.0	3.7*	
	WLC	16.1*	16.1*	10.1	12.0*	6.9	8.8*	4.8	6.8			3.4	3.7*	
1.5	NLC <sup>1)</sup>	14.0	17.0*	8.0	12.0*	5.3	8.8*	3.4	6.7*			2.3	4.0*	8.96
	SLC	15.8*	17.0*	8.9	12.0*	6.0	8.8*	3.9	6.7			2.7	4.0*	
	LC	16.8	17.0*	9.3	12.0*	6.4*	8.8*	4.2	6.8*			2.9	4.0*	
	WLC	17.0*	17.0*	10.0	12.0*	6.8	8.8*	4.6	6.8*			3.2	4.0*	
0	NLC <sup>1)</sup>	13.5	18.6*	7.5	12.1*	5.0	8.8*	3.2	6.5			2.3	4.6*	8.78
	SLC	16.0	18.6*	8.9	12.1*	5.7	8.8*	3.7	6.6			2.7	4.6*	
	LC	17.6*	18.6*	9.2	12.1*	6.0	8.8*	4.0	6.6			2.9	4.6*	
	WLC	18.6*	18.6*	10.1	12.1*	6.6	8.8*	4.4	6.6			3.3	4.6*	
-1.5	NLC <sup>1)</sup>	12.8	19.4*	7.1	12.3*	4.5	9.0*	3.0	6.3			2.5	4.3*	8.31
	SLC	15.3	19.4*	8.2	12.3*	5.2	9.0*	3.5	6.4			2.9	4.3*	
	LC	16.6	19.4*	8.7	12.3*	5.6	9.0*	3.8	6.4			3.1	4.3*	
	WLC	19.0	19.4*	9.7	12.3*	6.1	9.0*	4.2	6.4			3.5	4.3*	
-3.0	NLC <sup>1)</sup>	12.7	19.8*	6.7	12.5*	4.2	8.1*	2.9	3.4*			2.9	3.3*	7.52
	SLC	15.1	19.8*	7.8	12.5*	4.9	8.1*	3.4	3.4*			3.3*	3.3*	
	LC	16.5	19.8*	8.4	12.5*	5.2	8.1*	3.4*	3.4*			3.3*	3.3*	
	WLC	18.8	19.8*	9.3	12.5*	5.8	8.1*	3.4*	3.4*			3.3*	3.3*	
-4.5	NLC <sup>1)</sup>	12.4	15.1*	6.4	8.2*							4.3*	4.3*	5.61
	SLC	14.9	15.1*	7.5	8.2*							4.3*	4.3*	
	LC	15.1*	15.1*	8.1	8.2*							4.3*	4.3*	
	WLC	15.1*	15.1*	8.2*	8.2*							4.3*	4.3*	

Classic

## Stick 2.70 m

m	Under-carriage	3.0 m		4.5 m		6.0 m		7.5 m		9.0 m		m
		LC	WLC	LC	WLC	LC	WLC	LC	WLC	LC	WLC	
10.5	NLC <sup>1)</sup>											
	SLC											
	LC											
	WLC											
9.0	NLC <sup>1)</sup>			6.0*	6.0*					3.6*	3.6*	5.73
	SLC			6.0*	6.0*					3.6*	3.6*	
	LC			6.0*	6.0*					3.6*	3.6*	
	WLC			6.0*	6.0*					3.6*	3.6*	
7.5	NLC <sup>1)</sup>			6.8*	6.8*	5.6	6.1*			3.2*	3.2*	7.26
	SLC			6.8*	6.8*	6.1*	6.1*			3.2*	3.2*	
	LC			6.8*	6.8*	6.1*	6.1*			3.2*	3.2*	
	WLC			6.8*	6.8*	6.1*	6.1*			3.2*	3.2*	
6.0	NLC <sup>1)</sup>			8.0*	8.0*	5.7	7.5*	3.7	5.6*	3.0	3.1*	8.24
	SLC			8.0*	8.0*	6.3*	7.5*	4.2	5.6*	3.1*	3.1*	
	LC			8.0*	8.0*	6.7*	7.5*	4.5	5.6*	3.1*	3.1*	
	WLC			8.0*	8.0*	7.2	7.5*	4.9*	5.6*	3.1*	3.1*	
4.5	NLC <sup>1)</sup>	15.1	16.1*	8.4	10.7*	5.6	8.2*	3.8	6.7*	2.6	3.1*	8.85
	SLC	16.1*	16.1*	9.3	10.7*	6.2	8.2*	4.2	6.7*	3.0	3.1*	
	LC	16.1*	16.1*	9.8	10.7*	6.5	8.2*	4.5	6.7*	3.1*	3.1*	
	WLC	16.1*	16.1*	10.6	10.7*	7.0	8.2*	4.9*	6.7*	3.1*	3.1*	
3.0	NLC <sup>1)</sup>	14.3	16.3*	8.1*	11.8*	5.5	8.7*	3.7	6.7*	2.4	4.4*	9.18
	SLC	16.0	16.3*	8.9	11.8*	6.1*	8.7*	4.2*	6.8	2.7	4.4*	
	LC	16.3*	16.3*	9.4	11.8*	6.3	8.7*	4.4	6.8*	2.9	4.4*	
	WLC	16.3*	16.3*	10.2	11.8*	6.8	8.7*	4.8	6.8	3.3	4.4*	
1.5	NLC <sup>1)</sup>	13.9	16.8*	7.9	12.0*	5.4	8.8*	3.5	6.6*	2.3	4.8*	9.25
	SLC	15.9	16.8*	8.8*	12.0*	6.0	8.8*	4.0	6.7	2.7	4.9*	
	LC	16.8*	16.8*	9.2	12.0*	6.3	8.8*	4.3	6.7*	2.9	4.9*	
	WLC	16.8*	16.8*	9.9	12.0*							