

275

- Total width 0.6m
- Max working radius 8.41m
- Petrol powered with LPG and electric options
- Diesel engine with electric option
- Zero length increase with electric option (except diesel)
- Operator control of outrigger extension
- Radio remote control as standard
- Working area limitation
- Slew limitation (optional)
- Intelligent throttle activation for economy and ecology

Max Boom Length 8.65m

Max Lifting Height 8.8m

Capacity 2.9t x 1.4m

Weight 1850 - 2090kg
(Depending on fuel option)



Capacity	700kg (max)
Length	1500mm
Weight	40kg
Tilt angles	0°, 20°, 40°, 60°



URW-295 [2.9t x 1.4m]

The compact but powerful URW-295 is narrow enough to fit through a standard doorframe and has almost 3 tonnes of lifting power.



It also leads the way technically with an array of innovative safety features including a computer-controlled intelligent voice warning system, the unique UNIC pressure compensation proportional valve and multi-function radio remote control operation.

Reference Code
MCU295

Additional Features



Radio remote control

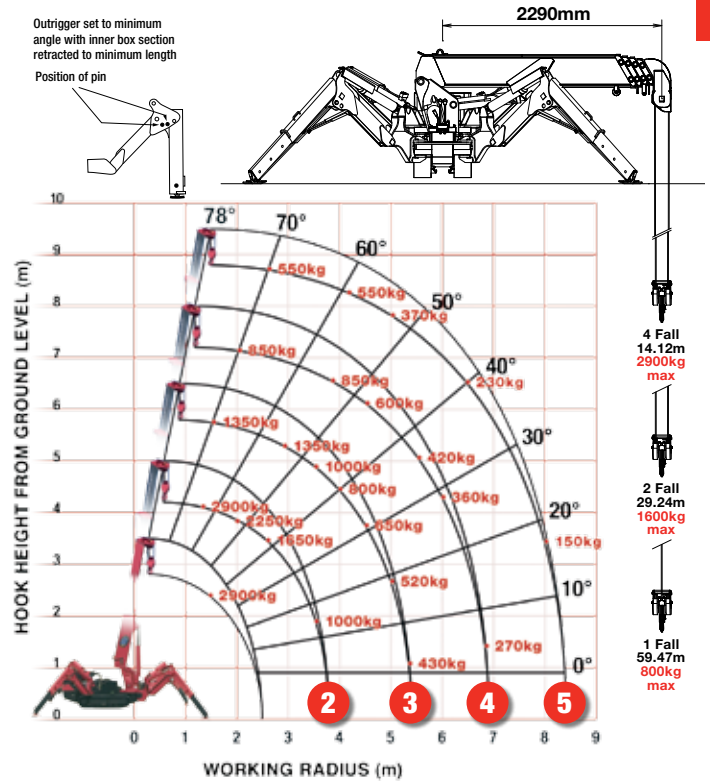
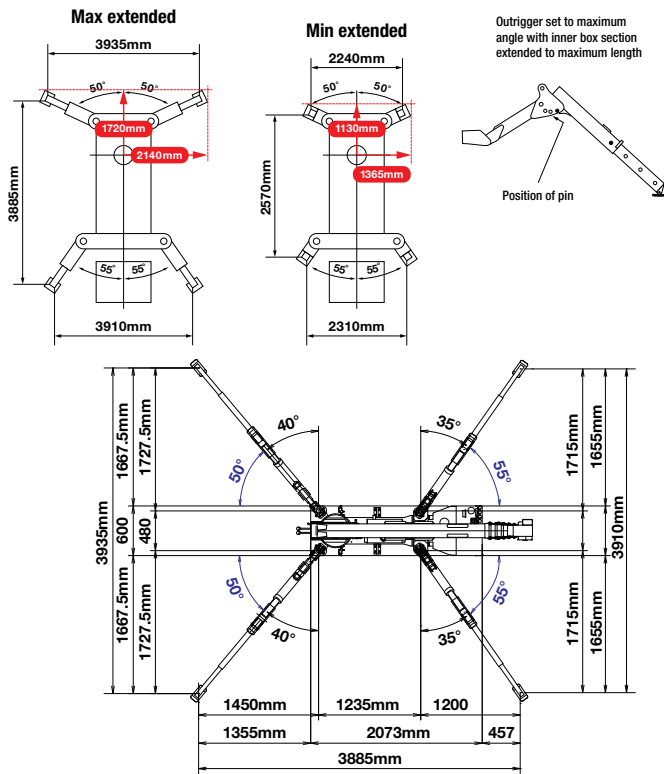


Full safe load indicator

Crane Specifications

Crane capacity	capacity:	2.9t x 1.4m
Max working radius	max:	8.41m
Max lifting height	approx:	8.8m (9.8m with fly jib, 10.47m with fixed hook)
Rope length	max:	14.12m (4 fall), 29.24m (2 fall), 59.47m (1 fall)
Dimensions	folded:	2690mm (2905mm diesel & electrical dual) (l) x 600mm (w) x 1375mm (h)
Weight	unladen:	1850kg (1950kg with electric option, 1920kg with diesel option, 2090kg with diesel and electric dual option)
Point loadings	Due to the many variables involved, point loadings are only available on request	
Hook speed	approx:	10m/min (with 4 layers and 4 falls)
Telescopic system	boom length: telescoping speed: boom type:	2.53 - 8.65m 6.12m/20 seconds 5 section hydraulically telescoping boom, hexagonal box construction
Derricking angle/speed	approx:	0 - 78°/11 seconds
Slewing angle/speed	approx:	360° (continuous) 1.5 rpm
Traction system	drive: travel speed: gradeability: track ground length: track ground pressure: track width:	hydrostatic, stepless forward and reverse 0 - 2.3km/h ±(20)° 1050mm 48kPa (0.49kg/cm²) 180mm
Engine	manufacturer: fuel: maximum output: starting method: tank capacity:	Mitsubishi (Kubota diesel) petrol with LPG and electric options, diesel with electric option 9.6kW (13PS) / 2000min rpm electric and recoil start as standard 6 litres petrol, 9 litres diesel
Electric motor	power: voltage:	3.7kW 400v AC 50/60Hz
Battery crane option	weight: voltage:	2100kg 48v 3.7kW (AC induction motor with controller and on-board charger)
Standard equipment	computer controlled moment limiter (safe load indicator), radio remote control, overwinding alarm, computer controlled intelligent voice warning system, multi-function operation by radio remote control, intelligent throttle activation, automatic hook stow, overload warning alarms, overload warning lamps, working area limitation	
Optional equipment	1 fall hook block, 2 fall hook block, LPG dual power, mains electric dual power (400v), battery powered option, diesel engine, low marking tracks, slew limitation, 300kg capacity small searcher hook, 700kg maximum capacity searcher hook, 700kg maximum capacity fly jib with single part line radio remote control with feedback display (with i3000 SLI) and data logging	

Rated Loads & Outrigger Positions



URW-295 Spider Crane

SECOND STAGE EXTENDED 2.53 - 4.075M BOOM LENGTH

Working radius	m	up to 1.0	1.4	1.5	1.8	2.0	2.5	3.0	3.5	3.835
Outrigger Max-extended	kg	2,900	2,900	2,650	2,250	2,050	1,650	1,300	1,000	900
Outrigger Min-extended	kg	2,000	2,000	2,000	1,450	1,100	650	490	350	250

THIRD STAGE EXTENDED 4.075 - 5.61M BOOM LENGTH

Working radius	m	up to 2.2	2.5	2.9	3.0	3.5	4.0	4.5	5.0	5.37
Outrigger Max-extended	kg	1,350	1,350	1,350	1,250	1,000	800	650	520	430
Outrigger Min-extended	kg	800	650	530	500	380	280	220	160	120

FOURTH STAGE EXTENDED 5.61 - 7.13M BOOM LENGTH

Working radius	m	up to 3.3	3.8	4.0	4.5	5.0	5.5	6.0	6.5	6.89
Outrigger Max-extended	kg	850	850	750	600	500	420	360	320	270
Outrigger Min-extended	kg	420	340	300	250	190	140	100	80	60

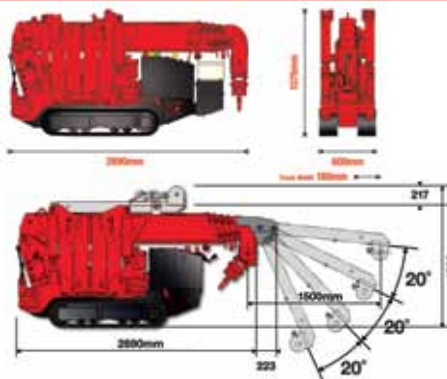
FIFTH STAGE EXTENDED 7.13 - 8.65M BOOM LENGTH

Working radius	m	up to 3.8	4.1	4.5	5.0	5.5	6.0	6.5	7.0	8.0	8.41
Outrigger Max-extended	kg	550	550	450	370	310	270	230	200	150	130
Outrigger Min-extended	kg	350	290	250	200	160	130	100	70	40	30

Wheeled URW-295 Spider Crane

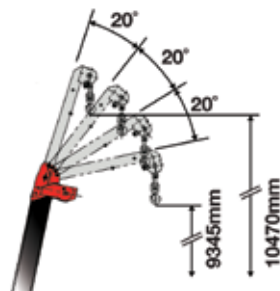


Dimensions



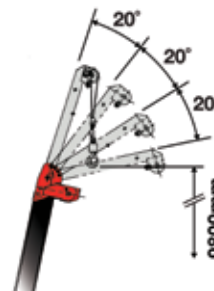
Searcher Hook

Maximum Load 500kg - 700kg
 (radius rated)



Fly Jib

Maximum Load 400kg - 700kg
 (angle rated)



Searcher Hook Small - 300kg

Stowed position



In operation



Lifting capacity 300kg

Length 500mm

Weight 15kg

Tilt angles 0°, 20°, 40°, 60°